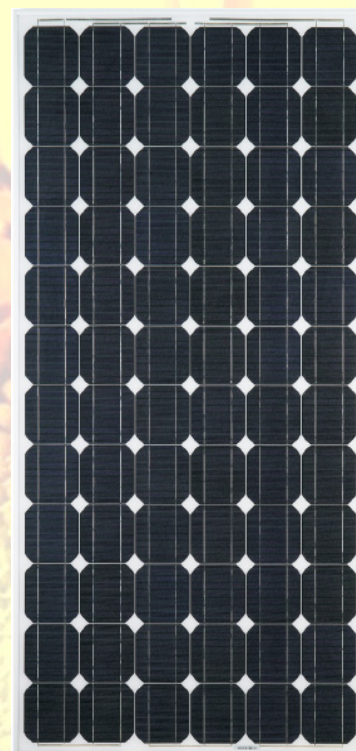




AS-5M Amerisolar

Amerisolar’s photovoltaic modules are designed for large electrical power requirements. With a 25 year warranty, AS-5M offers high-powered, reliable performance for solar projects, both on- and off-grid.

- Solar Cell: High efficiency solar cells ensure high performance of solar module and create maximum power output.
- Low iron tempered glass: Anti-reflecting coating and high transmission rate glass increase the power output and mechanical strength of solar module.
- Aluminum frame: Without screw, corner connection. 10 holes on the frame can be installed easily.
- Superior Junction box: Multi function junction box with water proof capabilities.
- Long lifespan: ≥ 25 Years.
- Tolerance: $\pm 3\%$.
- Good performance of preventing from atrocious weather such as wind and hails.
- Resisting moisture and etching effectively, not effect by geology.
- The certificate issued by international authority: CE, TUV, IEC.



Electrical characteristics

P_{max} , V_{oc} , I_{sc} , V_{mp} and I_{mp} at STC (1000W/m², 25 ± 2°C, AM 1.5);

Maximum Power (P_{max})	160W	165W	170W	175W	180W	185W
Open Circuit Voltage (V_{oc})	42.55V	42.59V	43.35V	43.39V	43.44V	43.47V
Short Circuit Current (I_{sc})	4.79A	4.92A	4.99A	5.12A	5.27A	5.4A
Maximum Power Voltage (V_{mp})	35.51V	35.54V	36.18V	36.21V	36.25V	36.28V
Maximum Power Current (I_{mp})	4.51A	4.64A	4.7A	4.83A	4.97A	5.1A
Module Efficiency (%)	12.54	12.93	13.32	13.71	14.10	14.49

Temperature Coefficients

Temperature Coefficients of P_m	-0.47 %/°C
Temperature Coefficients of V_{oc}	-0.38 %/°C
Temperature Coefficients of I_{sc}	+0.04 %/°C
Temperature Coefficients of I_m	+0.04 %/°C
Temperature Coefficients of V_m	-0.38 %/°C

Absolute Maximum Limits

Maximum System Voltage	1000V DC
Module Operating Temperature	-40°C to +85°C
Noct (DEGC.)	45°C ± 3°C

WARRANTY

- Product: 5 years
- Power Output:
90%----10 years
80%----25 years



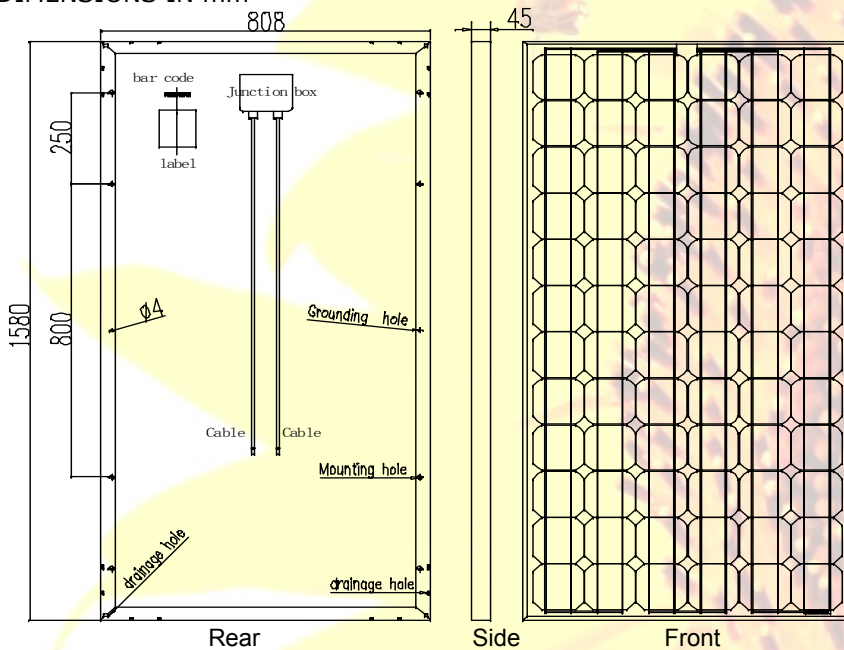
Passionately
committed to
delivering innovative
energy solution

Mechanical characteristics

Cell Technology	125mmx125mm [4.92inx4.92in]	Mono-crystal silicon
Number of Cells (Pcs)	72 (6x12)	
Dimensions	1580mmx808mmx45mm	
Weight	15.5kg	
Frame	Aluminium-alloy	
Length of Cables (mm)	900mm	
Allowable Hail Load	Steel ball fall down from 1m height	
Surface Maximum Load Capacity	60m/s(540kg/m ²)	

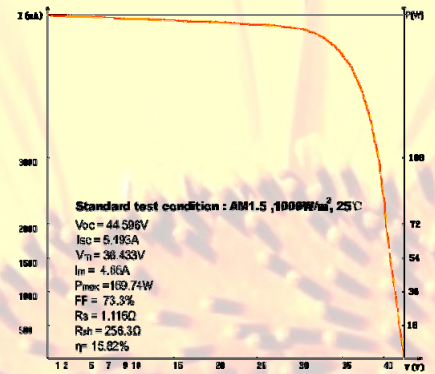
Basic Dimensions

ALL DIMENSIONS IN mm

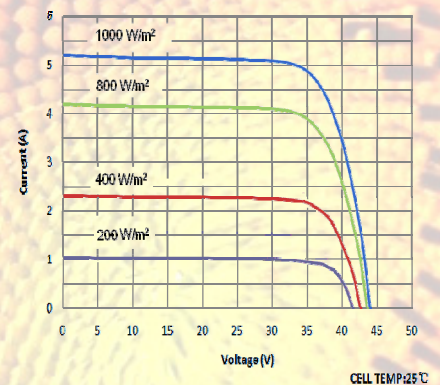


1. Front: tempered solar glass 3.2mm
2. EVA
3. 72 high efficiency solar cells
125mm X 125mm
4. EVA
5. Rear: laminate (weatherproof and waterproof)

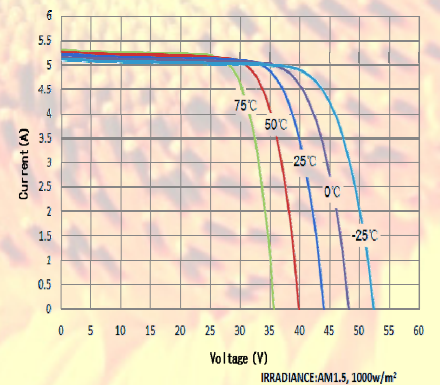
I-V curves



Module at STC



Various Irradiance Levels



Various Temperatures

Worldwide Energy and Manufacturing USA, Inc.

408 N. Canal Street Unit A & B, South San Francisco, CA 94080

Tel : +1-650-794-9888

Fax : +1-650-794-9878

[Http://www.wwmusa.com](http://www.wwmusa.com)

E-mail : solarsales@wwmusa.com